

DELIVERED ON TIME ✓ AND ON BUDGET ✓



PROUDLY LOCALLY OWNED AND OPERATED

---

## CAPABILITY STATEMENT



## CONTENTS

Our Vision	3
Our Values	4
About Us	6
Our People	9
Introducing Our Team	10
Plant & Equipment	12
Hiring Advantage	13
Projects Undertaken	14
Client Testimonials	17
Management Systems	18
Social and Sustainable Outcomes	19
• Environmental Focus	
• Social Responsibility	

## GBM Consulting Services | JM CIVIL

### Mission Statement

Our vision is to be regional Australia's most respected civil construction and plant and equipment hire company.



## OUR VALUES

**GBM Consultancy Services | JM CIVIL** was founded on the following core values:

### OUR WORD

We do what we say, and we always deliver on agreed timelines.

### OUR PEOPLE ARE OUR CORE STRENGTH

Our primary strength lies in our people and their commitment to the family values that our business has been built upon. We develop, encourage and reward our team for their performance. Investing in our staff is not just an important part of our culture, but important to the longevity of our business.

### INNOVATION

We seek to be creative, innovative and embrace changes. We are agile and adapt new technology and perspective to our thinking.

### EXCEPTIONAL SERVICE DELIVERY

Regardless of project size, our customers are treated with the same level of respect and commitment to service delivery. We ensure that their needs are met in a timely, cost effective and proactive manner.

## QUALITY

We believe in quality not quantity. The accuracy, attention to detail and transparency in our project deliver has earned us the respect of our clients.

## ENVIRONMENT

We are committed to the protection and preservation of the environment and to minimising the impacts upon the community and the environment from our work.

## INTEGRITY OF OUR RELATIONSHIPS

We pride ourselves on the relationships we have with our clients. It is not by chance that we have established a reputation for being the leader in our industry. This is built on and sustained by honest collaboration and communication.

## ABOUT US

A local, family owned and operated business with over 25 years industry experience, **GBM Consulting Services | JM CIVIL**, is Mildura's premier specialist civil construction and wet and dry equipment and plant hire company providing:

-  Supply And Hire Of Immaculately Maintained Construction And Plant Equipment
-  Bulk Earthworks
-  Civil Works Project Management
-  Excavations Including Trenching For Utilities, Drainage etc.
-  Earthworks Associated With Housing Subdivisions
-  Road Works Including Excavating, Asphaltting, Concreting, Kerbing
-  Site Remediation

We are proud that we provide access to advanced premium excavation and plant and equipment hire services.



**GBM Consulting Services | JM CIVIL** is regionally based in Mildura and service large and small scale projects, including the supply and hire of construction and plant equipment throughout Victoria (VIC), New South Wales (NSW), and South Australia (SA). Our ability to mobilise and transport equipment, means we can reach a broad area.

We work across various public and private industry sector projects including road and water authorities, municipal councils, government organisations (Parks Victoria, Department of Environment, Land, Water and Planning) and private developers.

Our business culture is based on hard work, trust, accountability and strong family values. With a highly skilled, capable, enthusiastic and adaptable work force, we have a proud record of delivering major works and projects with tight budgets, quality and time constraints. This has been fundamental to developing a respected reputation within the industry.

**GBM Consulting Services | JM CIVIL** is an agile, dynamic consulting and plant and equipment hire business that is able to quickly respond to the

ever changing needs of our clients, who value our adaptability, innovative thinking, attention to detail and clear communication.

To ensure that we retain our reputation as industry leaders, we continue to innovate and explore new technologies that support efficient safety focused practices that deliver value for money, accountability, innovation and delivery.

**GBM Consulting Services | JM CIVIL** is committed to safety and quality and has rigorous business practices and policies that ensure we maintain a level of excellence in all we do. Our team is licensed and trained in all safe work practice and we pride ourselves on our onsite safety record. The safety of our people and the communities we work within is paramount.

We are prequalified with Mildura Rural City Council, VIC Roads, Lower Murray Water and various other local entities.



**GBM Consulting Services | JM CIVIL** has a large, well maintained fleet of specialist equipment for civil construction projects and for wet and dry hire, increasing our capacity to work across a diverse range of projects. We are suitably qualified to provide equipment to facilitate speedy access and delivery of capital works programs and operational service delivery across regional Australia.

If you are looking for precision and perfection for your civil construction projects or plant and equipment hire, **GBM Consulting Services | JM CIVIL** is the team that you can trust. We don't just deliver projects, plant and equipment, we deliver outcomes.

**For further information on our capabilities, please contact the GBM Consulting Services | JM CIVIL team on (03) 5022 8860.**

**Delivered on time and on budget  
Total customer satisfaction**

## **OUR PEOPLE ARE OUR DIFFERENCE**

**GBM Consulting Services | JM CIVIL** staff ensure quality service and deliver exceptional customer satisfaction for both our plant and equipment hire and our project delivery. We pride ourselves on having a people focused culture, evidenced by the longevity of employment of our staff.

With a wide range of experience, skills and aptitudes we have the flexibility to assign the 'right staff to the right projects.'

The focus of our team is to deliver projects and plant equipment hire that are on time and on budget and ensure effective communication at all stages of the project.

Our team is highly skilled and is made up of estimators, project managers, plant operators,

OH&S compliance officers, and administration and marketing specialists. We encourage and motivate our people to engage in continuous learning because we understand that our organisational capability is developed through our people.

We appreciate that no project is the same, each with its own sets of requirements and challenges. Our proven track record for successfully completed projects and equipment and plant hire reinforces our capabilities to apply our skills and industry knowledge to all circumstances. This is what sets us apart.

All staff employed by **GBM Consulting Services | JM CIVIL** in a technical capacity (plant operators, skilled labourers), are licensed appropriately to the tasks that they are hired to perform. Training records are maintained and reviewed regularly to identify training and development opportunities and gap analysis.

## INTRODUCING OUR MANAGEMENT TEAM

Here are some of the members of our team that you are likely to meet when working with us:



**Jason Marks – Managing Director**

Jason is an experienced civil contractor with over 20 years' experience in complex civil works. He has been responsible for road and civil projects across Victoria, New South Wales and South Australia. He is regarded highly among the industry for his professionalism and ability to deliver projects that are on time and on budget.

Jason is recognised by his team as an inclusive leader, which ensures that **GBM Consulting Services | JM CIVIL** continues to be an employer of choice. He has a strong focus on community and regularly contributes both financially and in-kind to community projects.



**Emma Marks – Special Projects, Human Resource Management, Marketing & Communications**

Emma oversees all special projects and leads our recruitment, human resource management and the training and development of staff. She is an integral member of our leadership team ensuring adherence to our company values and culture.

Known for her strategic vision, creative flair and attention to detail, Emma is responsible for all marketing and communications and oversees **GBM Consulting Services | JM CIVIL's** corporate and social responsibilities through the management of our sponsorships.



**Shannon Martin - Operations Manager**

Shannon is an experienced site and personnel manager with over 20 years experience in transport and logistics.

Shannon oversees all GBM sites from possession to project completion. He has exceptional leadership, attention to detail and project management skills. He is known for his ability to ensure operations flow to deliver projects that are on time and on budget. Site and staff safety is a priority for Shannon on all construction sites.



**Melinda Nicholls – Administration**

Melinda is the administration officer that every team needs. She is responsible for all aspects of office administration and has a wide range of skills ensuring her adaptability throughout the organisation. Her knowledge of the industry and her exceptional organisational and communication skills are the key to the maintaining and building of our client relationships. Melinda is responsible for the development of all project documentation, quality, safety and environmental systems and is a much respected member of the **GBM Consulting Services | JM CIVIL** team.



**Kurt Seier – Civil Foreman**

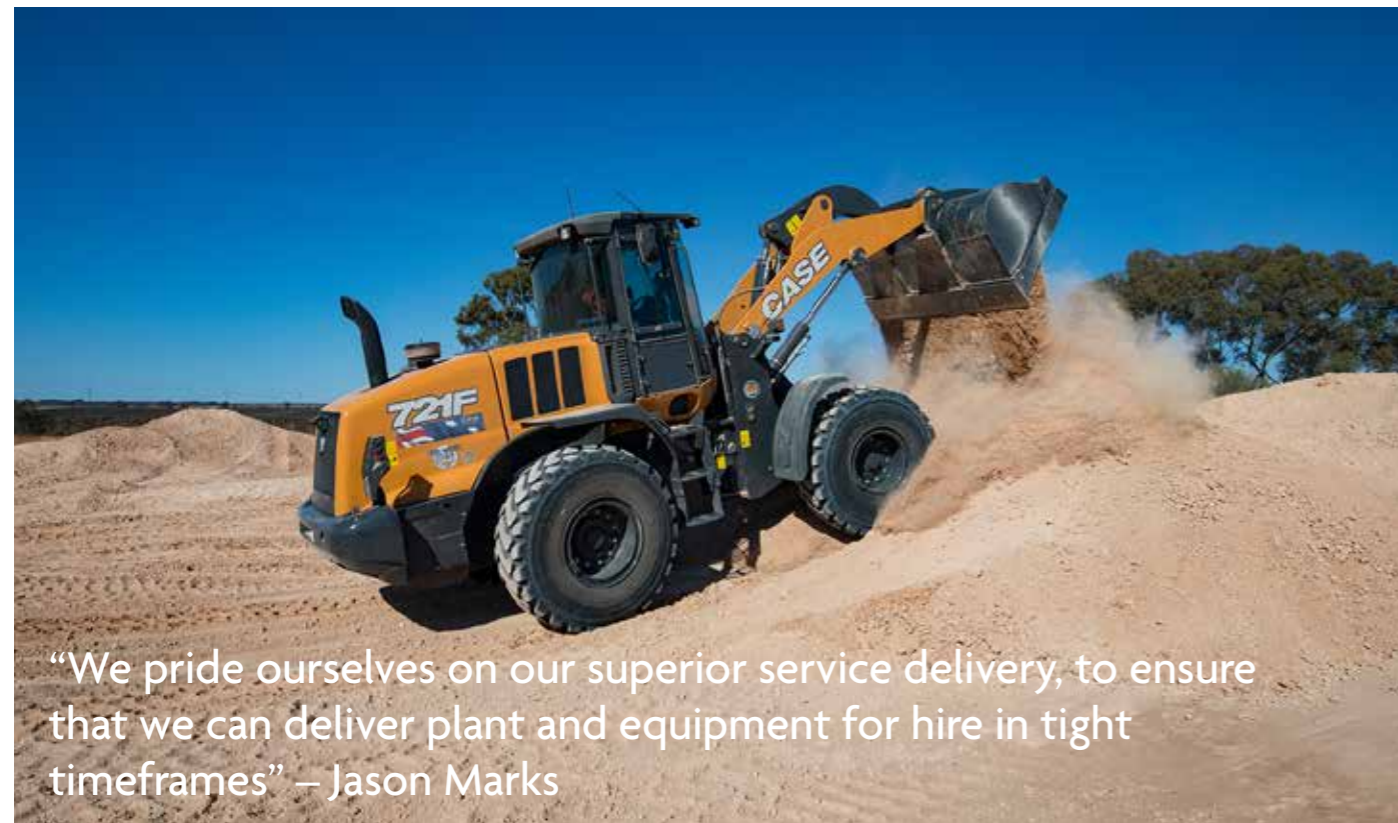
Kurt is an experienced civil operator with over 17 years' experience in civil works. He is a nationally assessed plant operator across 6 plant categories.

Kurt oversees all sites from possession to project completion. His leadership, attention to detail and project management skills are unsurpassed. His is recognised for his excellent communication with clients and for delivering projects that are on time and on budget.

He has an exceptional safety record for the projects he is involved in.

**GBM Consulting Services | JM Civil plant operators:**

Our plant and equipment operators are some of the best in their field. We have depth in our team with 15 plus experienced operators, in addition to an on-call mechanic. Each has all necessary licencing requirements, ensuring on site safety is the highest priority.



**PLANT AND EQUIPMENT**

With a large modern fleet of well maintained, regularly serviced, specialist equipment suited for excavation and construction, **GBM Consulting Services | JM CIVIL** are able to complete your project to the highest standard. The quality and size of our fleet allows us to supply and hire plant and equipment for both wet and dry hire.

We also have a large range of attachments available for long and short term hire along with small compaction equipment.

**GBM Consulting Services | JM CIVIL** has a continuous upgrade program for equipment to ensure we have an innovative, state of the art fleet to deliver projects. All equipment undertakes regular servicing to ensure optimum performance.

**GBM Consulting Services | JM CIVIL** understand the need for precision and perfection from our equipment and take pride in delivering a plant and equipment service that is fast, efficient and effective to provide customers with project confidence.

We are proud that our fleet allows us to provide innovative solutions to complex construction problems.

OUR FLEET OF VEHICLES AND PLANT INCLUDES	
Prime Movers	Tipper Trucks
Trailers	Excavators (1 Tonne To 20 Tonne)
Rollers	Sprayers
Loaders	Graders GPS Equipped
Passenger Vehicles	Light Trucks
Low Loaders	Skid Steers

**GBM CONSULTING SERVICES | JM CIVIL  
HIRING ADVANTAGE**

**“We have great satisfaction in knowing that our clients trust what we do: our equipment, our service and our staff. We don’t just say that we can do it, we deliver on our promise.”**

Example of the competitive advantages received when hiring through **GBM Consulting Services | JM CIVIL** includes our commitment to the following:

- A modern, well maintained and serviced heavy earthmoving fleet. We are continuously investing in new equipment and technologies to provide our clients with the most up to date range of equipment. We provide our clients with innovative solutions to complex construction problems.
- The ability to provide hire of equipment within 24 hours of notification.
- Delivering options for increased productivity: our equipment has the most up to date technologies to ensure accuracy and save time, material and money.
- We offer onsite-field maintenance and full support.
- Our superior local industry knowledge ensures the allocation of the most suitable industry equipment for the job.
- We provide responsible environmental management and safe-work strategies.
- We are fully compliant in accordance with government policies and procedures relating to Occupational Health and Safety: including MRCC ‘Prequalified Contractor Pack’ prior to the commencement of work.
- We provide a safe working environment for all: staff, contractors and members of the public. Our quality systems complement and reinforce this commitment with regular ongoing training to develop and ensure staff awareness.
- We provide daily pre-start checklists that are available for all equipment and plant upon request.
- We maintain an up-to-date OH&S program, which is particularly important for anyone working on site with heavy earthmoving equipment. Our Operators complete a Safe Work Method Statement (SWMS) for every job on which they are working.

The **GBM Consulting Services | JM CIVIL** fleet is comprised of industry leading brands with some of the most innovative and leading edge technologies to safe-guard the environment and the worksite.

Our support and service is unsurpassed. We know that our people are our difference and continually invest in their training to ensure that they are best in field. Our systems, technology and processes ensure continued client satisfaction. Whether your hire is a wet or dry hire, you can have confidence in knowing that our equipment is designed to deliver what you want, when you want – that’s the **GBM Consulting Services | JM CIVIL** difference.

**GBM Consulting Services | JM CIVIL** has built a strong reputation for quality: both in terms of our fleet of equipment and for exceptional project delivery. Coupled with our support services in the hire industry, we are recognised for our commitment to total customer satisfaction.

**We provide responsible environmental management and safe work strategies**



## PROJECTS UNDERTAKEN

**GBM Consulting Services | JM CIVIL** are fully licensed and qualified and have extensive experience for delivering wet and dry plant hire and civil construction projects. We have worked across many exceptional transformational projects. Our experience covers across many project types including:

**GBM Consulting Services | JM CIVIL** have an ongoing pre-approved plant and equipment hire contract with Mildura Rural City Council. This relationship has been in existence for in excess of ten years.

### ROAD CONSTRUCTION, VARIOUS HARDSTANDS AND SERVICE INSTALLATIONS

**Kiamal Road Ouyen Victoria (MRCC):** pavement construction for large scale heavy vehicles.

**8th Street Mildura (Between Madden & Orange):** reconstruction of roads and all associated works.

**Karadoc Ave & 14th Street, Irymple (MRCC):** construction of a new roundabout including deep lift pavement, bridging and construction.

**Arumpo Road - Buronga NSW:** pavement works and excavation on high voltage substation.

**Broken Hill Council** large scale inner city works project that included road reconstruction of failed flexible pavement/road.

### POWER SUBSTATION & SOLAR ENERGY PLANTS

Over the last two years we have supplied wet and dry hire for BMD and Consolidated Power Project for the Ouyen Solar Farm and Arumpo Power Substation reconstruction.

The full construction of the substation at Arumpo Road Buronga including all grid works.

## COMMERICAL PROJECTS

**Walton's - Big W | Dan Murphy:** all civil works including kerbing, channel and all associated concrete works.

### SUB DIVISIONS

**Quality Estate:** large scale land development including sub surface drainage, full construction of sub division - including road construction and infrastructure.

**Etiwanda Avenue, Mildura:** construction of housing sub division - excavation of roadways, installation of drainage, concrete curbs and footpaths, Powercor trenching and associated works, pavement and asphalt works and street furniture.

### ZILZIE WINES

Zilzie Wines project included routine road maintenance, traffic upgrades and earth works through to the upgrading the front of the winery.

## TASCO PETROLEUM

Tasco Petroleum involved the resurfacing works for service stations and bulk depot facilities across Australia.

### MISCELLANEOUS PROJECTS

**Redevelopment Sunset Strip - Koorlong:** complete reconstruction including slip form barriers and laser secreted concrete.

**Merbein Pump Hill - drainage upgrade :** rock set into concrete Swale

**Koorlong Water Treatment Plant - (Lower Murray Water):** Construction of Bio Solids Hardstand

**Werrimull/Lake Cullulleraine Drift Sands Project - MRCC:** Currently in progress for MRCC

**Wentworth Shire Council - at Curlwaa Boat Ramp:** installation of a retainer wall.

**Baldwin Boats - Boat ramp and retainer**





## CLIENT TESTIMONIALS

**We are proud of the long standing relationships we have with our clients. But don't just take our word for it, here is what just a few of our respected and highly valued clients have to say about us:**

“Zilzie Wines has been working with GBM Consulting for 12 years. We've engaged them to manage projects from routine road maintenance, traffic upgrades and earthworks through to our latest project, upgrading the front of the winery.

The Team at GBM are great to work with. We find that bringing them into discussions in the early stages of a project ensures everyone has a clear understanding of both the 'what' and the 'why'. GBM brings their years of expertise to the table collaborating with us to ensure the right solutions for our business. GBM delivers high quality projects first time, on time and on budget, all while minimising disruption to our workflow and adhering to the strict requirements of a food grade facility.

GBM's experience, expertise, professionalism, reliability and accountability means we go into each new project confident of our interests and assets are being looked after throughout the journey.

GBM's team approach of having the right people involved from the beginning to end, gathering data, scoping the project, providing the quote and the delivery means the who experience for us is efficient and effortless.

I would highly recommend contacting GBM Consulting for your civil construction needs”

**Andrew Forbes – Managing Director**

**ZILZIE WINES PTY LTD**

“GBM have completed numerous resurfacing works for our company at Service Stations and Bulk Depot facilities. The work is first class, within budget and on time. Communication and professionalism by GBM staff have always been of the highest quality. I would have no issues in recommending GBM for any earthworks tasks.”

**Noel Hedwards - Operations Manager**

**TASCO PETROLEUM**

“Having worked closely with GBM Consulting Services on 3 large and numerous smaller industrial | residential projects over a 10 plus years, I am pleased to say that the company has continuously displayed competitive pricing, excellent professionalism, communication and timeline management, consistently achieving quality long terms results in delivering completed projects. I have no hesitation in recommending GBM Services Consulting.”

**Dale Linney – Managing Director**

**SARNIA PROPERTY GROUP**



## SOCIAL AND SUSTAINABLE OUTCOMES

The following social and sustainable outcomes are provided by **GBM Consulting Services | JM CIVIL**.

### ENVIRONMENTAL FOCUS

**GBM Consulting Services | JM CIVIL** is committed to protecting the environment, by maintaining an environmental management system compliant to ISO 14001. This policy and the environmental management system apply to all aspects of the business, including all projects and all internal business management processes and activities.

With a business philosophy that pollution and habitat destruction can always be minimised, environmental impact is considered in all projects undertaken. Our practices and technology selection are designed to minimize and mitigate potential impacts.

As a company, we are committed to continuous improvement, and are always open to implementing necessary actions to improve our environmental performance.

#### We currently and will continue to do this by:

- Proactively seeking out and engaging with local stakeholders (or those that may be impacted by our works) to understand their values and interests, reduce the impact of our works, and contribute to economic concerns. By listening to and understanding concerns and finding a mutually agreeable solution to mitigate these with our actions, we integrate these into our planning and decision making.
- Monitoring and evaluating our environmental performance.
- Taking action as needed, where the need for improvement is identified.
- Liaising with clients on their environmental expectations and requirements.
- Learning from our mistakes.

We look for opportunities to partner and improve conservation through our own activities and in collaboration with others.

### SOCIAL RESPONSIBILITY

To ensure we adhere to our social responsibilities, **GBM Consulting Services | JM CIVIL** implement the following guidelines and have internal and external processes to monitor:

**Community Engagement:** We identify stakeholders and how they may be impacted by activities and ensure effective and proactive communication.

**Indigenous Peoples:** We consult with Indigenous stakeholders to understand priorities, culture and work together to address concerns.

**Buy Local:** We have a buy local philosophy: for our equipment, fuel, staff training and employment of staff, regulatory services (accounting, insurance, banking) etc. ensuring that we are reinvesting in our local economy.

**Community and social investment:** We align our investments with community needs and company priority.

**Health and Safety:** We ensure that safe working conditions are provided for all projects that we are involved in: including our plant, equipment, staff and community.

**Community Contribution:** We see it as part of our corporate responsibility to give back the communities in which we operate: not because we have to, but because we want to. We recognise that our local community groups are the heart and soul of small regional towns. In the last financial year, both financially and in-kind we contributed over \$25,000 to local community organisations. We also provide our staff with opportunities to commit to community projects that make a difference.

**GBM Consulting Services | JM CIVIL** believes that our community commitment expands to beyond the Mildura city to include surrounding regional and rural communities.

**We have donated (financially and in-kind) over \$25,000 to local community organisations.**

## MANAGEMENT SYSTEMS

**GBM Consulting | JM Civil** is committed to:

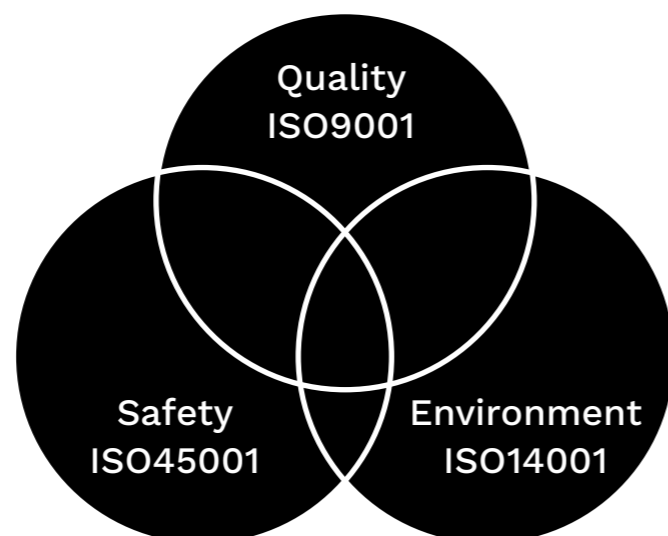
- Delivering our projects in a standardised way using our Project Delivery Framework, to ensure our clients needs are met at every stage of the process
- Providing and maintaining a working environment that is safe, and without risk to employee health, whilst ensuring compliance to all applicable legislation and client requirements.
- Protecting the environment and ensuring its preserved for future generations.

We achieve this by maintaining an Integrated Management System (IMS) compliant to quality standard ISO 9001, environmental standard 14001 and the new safety standard ISO 45001.

Our Project Delivery Framework is a four stage process that was developed to standardise project delivery and ensure that we deliver a high quality service and total customer satisfaction.

The Integrated Management System is audited annually and certified by a Lead Auditor.

## GBM Consulting | JM Civil Integrated Management System





PROUDLY LOCALLY OWNED AND OPERATED

---

GBM Consulting Services Pty Ltd  
Phone (03) 5022 8860  
383 Ontario Avenue, Mildura, VIC. 3500  
ABN 50 637 342 793 / ACN 076 827 211.